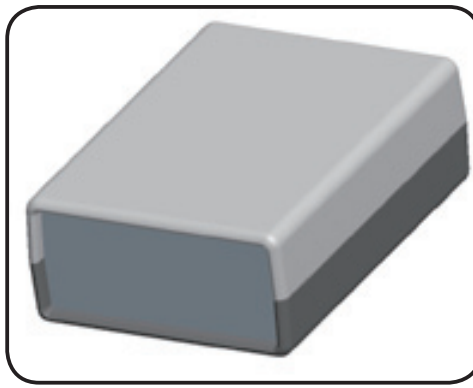


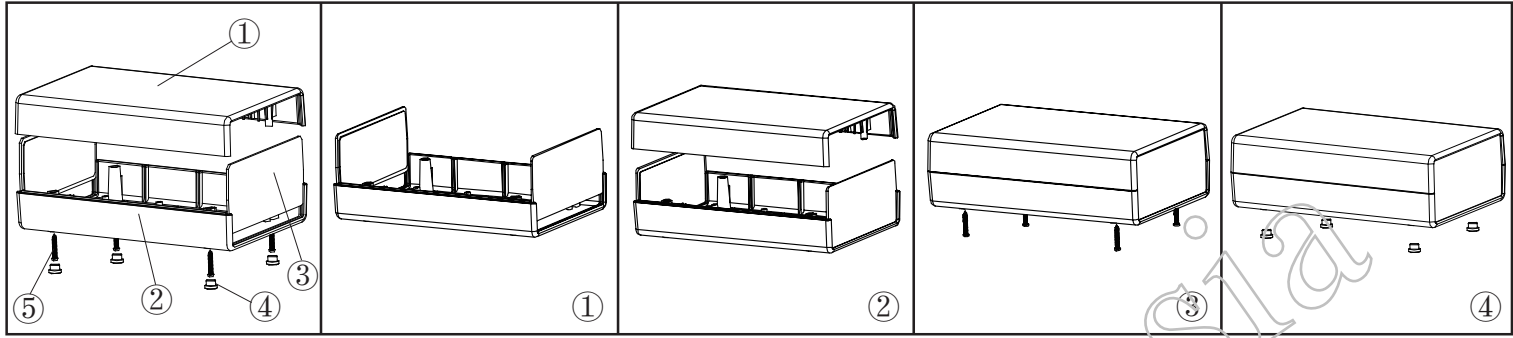
产品型号(MODEL NO.): BDH 20001-A1


产品尺寸 ( SIZE ): 105×75×36 mm


产品重量(WEIGHT):





15221500




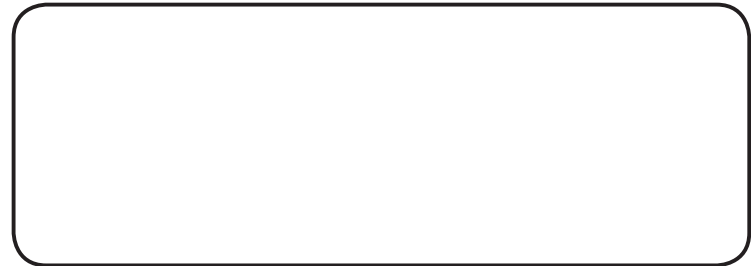
①  产品编号(NUMBER):20001-B1  
 产品名称(NAME):上壳 EPIVALVE  
 模具编号 (P/NO):BAH10055-A1A2  
 材料(MATERIAL):ABS(LIGHT GREY:FS20412)  
 用量(QUANTITY):1 PCS  
 重量(WEIGHT):

②  产品编号(NUMBER): 20001-C1  
 产品名称(NAME):下壳 HYPOTHECA  
 模具编号(P/NO): BAH10055-A1A2  
 材料(MATERIAL):ABS(LIGHT GREY:FS20412)  
 用量(QUANTITY): 1 PCS  
 重量(WEITHG):

③  产品编号(NUMBER):20001-D1  
 产品名称(NAME): 挡板 BAFFLE  
 模具编号(P/NO): BAH10055-A3  
 材料(MATERIAL):ABS(LIGHT GREY:FS20412)  
 用量(QUANTITY): 2 PCS  
 重量(WEITHG):

④  产品编号(NUMBER): BP-9  
 产品名称(NAME): 脚垫 FOOT PAD  
 模具编号(P/NO): BAH10020-A4  
 材料(MATERIAL):PVC(LIGHT GREY:FS20412)  
 用量(QUANTITY): 4 PCS  
 重量(WEITHG): 0.258 g

⑤  产品编号(NUMBER):PA2.6×12  
 产品名称(NAME):圆头螺丝SELF-TAPPING SCREW  
 规格(STANDARD): M2.6×12  
 材料(MATERIAL):铁 IRON  
 用量(QUANTITY): 4 PCS



名称 NAME	尺寸 SIZE (MM)	CARTON No.	G . W (KG)	N . W (KG)	每箱数量 QUANTITY	PE袋 POLYBAG
小箱 SAMLL CARTON						
大箱 BIG CARTON						