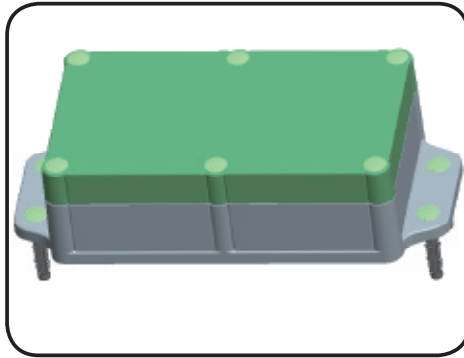


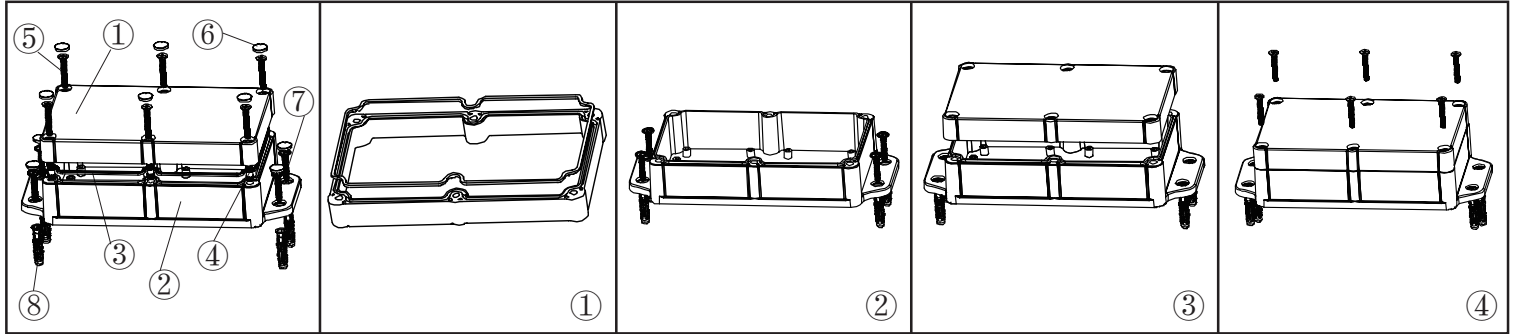
产品型号(MODEL NO.): BWP 10012-A2

产品尺寸 ( SIZE ): 200×94×51MM


产品重量(WEIGHT):



1 1 2 2 2 0 2 3

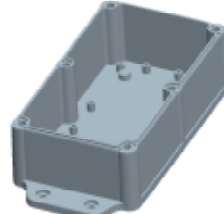


①



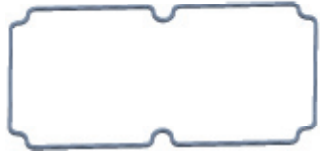
产品编号(NUMBER):10012-B2  
 产品名称(NAME):上壳 EPIVALVE  
 模具编号 (P/NO) :BAH10025-B3  
 材料(MATERIAL):PC(TRANSPARENCE)  
 用量(QUANTITY):1 PCS  
 重量(WEIGHT) :

②



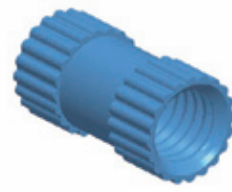
产品编号(NUMBER): 10002-C1  
 产品名称(NAME):下壳 HYPOTHECA  
 模具编号(P/NO): BAH10025-A1 A2  
 材料(MATERIAL):ABS(LIGHT GREY:FS20412)  
 用量(QUANTITY): 1 PCS  
 重量(WEITHG) :

③




产品编号(NUMBER): 10002-D1  
 产品名称(NAME):防水圈GASKET  
 材料 (MATERIAL): 橡胶RUBBER  
 用量(QUANTITY): 1 PCS  
 尺寸 (SIZE): 155x87x1.8 MM  
 重 量(WEIGHT):

④



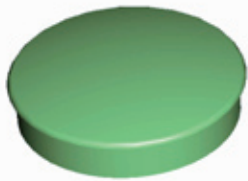
产品编号(NUMBER): M4×10  
 产品名称(NAME):铜套 COPPER NUT  
 规格(STANDARD): M4×10  
 材 料(MATERIAL): 铜 COPPER  
 用量(QUANTITY): 6 PCS  
 颜 色 (COLOR): 铜色 COPPER

⑤




产品编号(NUMBER): KM4×25  
 产品名称(NAME):GRUB SCREW  
 规格(STANDARD): M4×25  
 材料(MATERIAL): STAINLESS STEEL  
 用量 (QUANTITY): 6 PCS

⑥




产品编号(NUMBER): KN-500-B1  
 产品名称(NAME):螺丝盖 SCREW LID  
 模具编号(P/NO): BAH10001-A3  
 材料(MATERIAL) : ABS(LIGHT GREY:FS20412)  
 用量(QUANTITY):10 PCS

⑦



产品编号(NUMBER):PWA4×30  
 产品名称(NAME):自攻螺丝SELF-TAPPING SCREW  
 规格(STANDARD): M4×30  
 材料(MATERIAL): 铁 IRON  
 用量(QUANTITY): 4 PCS

⑧



产品编号(NUMBER): S-6  
 产品名称(NAME):墙钉 WALL NAIL  
 模具编号(P/NO): BAH10032-A1A2  
 规格(STANDARD): S×6 φ4-5  
 材料(MATERIAL): PP(GREY:CM906)  
 用量(QUANTITY): 4 PCS

名称 NAME	尺寸 SIZE (MM)	CARTON No.	G . W (KG)	N . W (KG)	每箱数量 QUANTITY	PE袋 POLYBAG
小箱 SAML CARTON						
大箱 BIG CARTON						