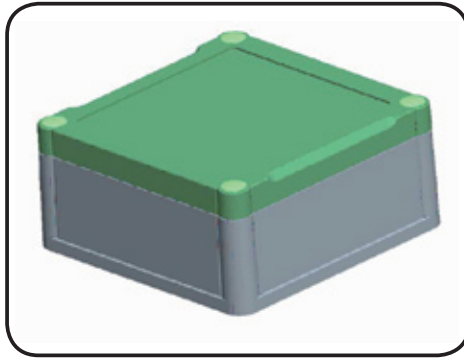


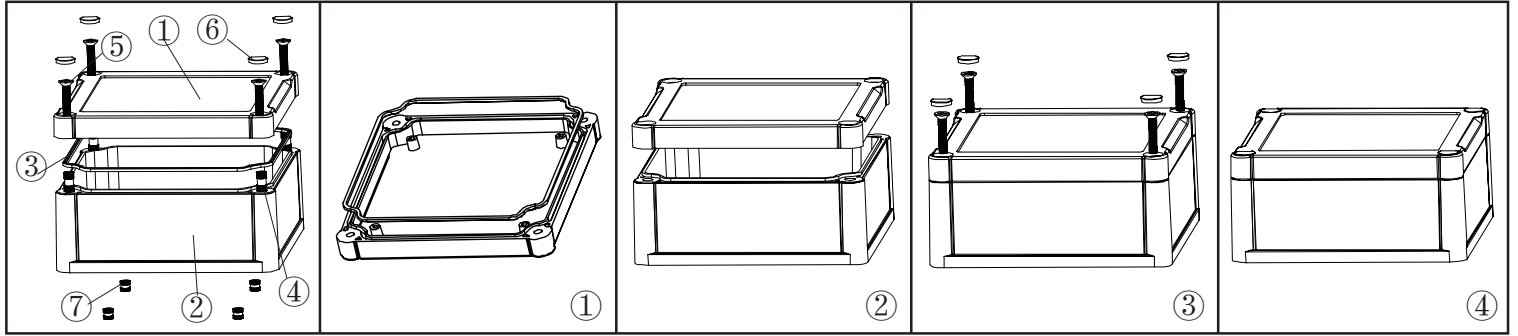
产品型号(MODEL NO.): BWP 10501-A2

产品尺寸 ( SIZE ): 120×120×55MM

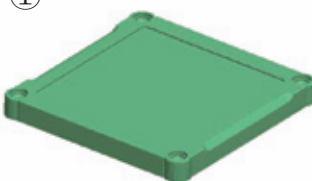
产品重量(WEIGHT):



1 1 2 2 3 0 0 1

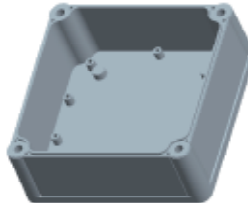


①




产品编号(NUMBER):10001-B2  
 产品名称(NAME):上壳 EPIVALVE  
 模具编号 (P/NO) :BAH10024-A2  
 材料(MATERIAL):PC(TRANSPARENCE)  
 用量(QUANTITY):1 PCS  
 重量(WEIGHT):

②




产品编号(NUMBER): 10501-C1  
 产品名称(NAME):下壳 HYPOTHECA  
 模具编号(P/NO): BAH10024-B1  
 材料(MATERIAL):ABS(LIGHT GREY:FS20412)  
 用量(QUANTITY): 1 PCS  
 重量(WEITHG):

③




产品编号(NUMBER): 10001-D1  
 产品名称(NAME):防水圈GASKET  
 材料 (MATERIAL): 橡胶RUBBER  
 用量(QUANTITY): 1 PCS  
 尺寸 (SIZE): 178.5x122.5x1.8 MM  
 重 量(WEIGHT):

④



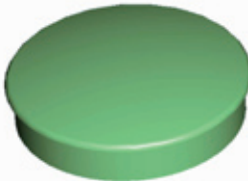
产品编号(NUMBER): M4×10  
 产品名称(NAME): 铜套 COPPER NUT  
 规格(STANDARD): M4×10  
 材 料(MATERIAL): 铜 COPPER  
 用量(QUANTITY): 4 PCS  
 颜 色 (COLOR): 铜色 COPPER

⑤



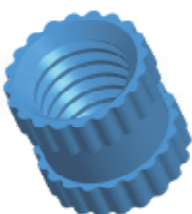
产品编号(NUMBER): KM4×18  
 产品名称(NAME):GRUB SCREW  
 规格(STANDARD): M4×18  
 材料(MATERIAL): STAINLESS STEEL  
 用量 (QUANTITY): 4 PCS

⑥



产品编号(NUMBER): KN-500-B1  
 产品名称(NAME): 螺丝盖 SCREW LID  
 模具编号(P/NO): BAH10001-A3  
 材料(MATERIAL): ABS(LIGHT GREY:FS20412)  
 用量(QUANTITY): 4 PCS

⑦



产品编号(NUMBER): M4×5  
 产品名称(NAME): 铜套 COPPER NUT  
 规格(STANDARD): M4×5  
 材料(MATERIAL): 铜 COPPER  
 用量(QUANTITY): 4 PCS  
 颜 色 (COLOR): 铜色 COPPER



名称 NAME	尺寸 SIZE (MM)	CARTON No.	G . W (KG)	N . W (KG)	每箱数量 QUANTITY	PE袋 POLYBAG
小箱 SAML CARTON						
大箱 BIG CARTON						