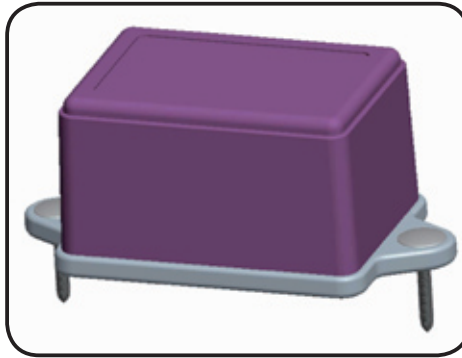


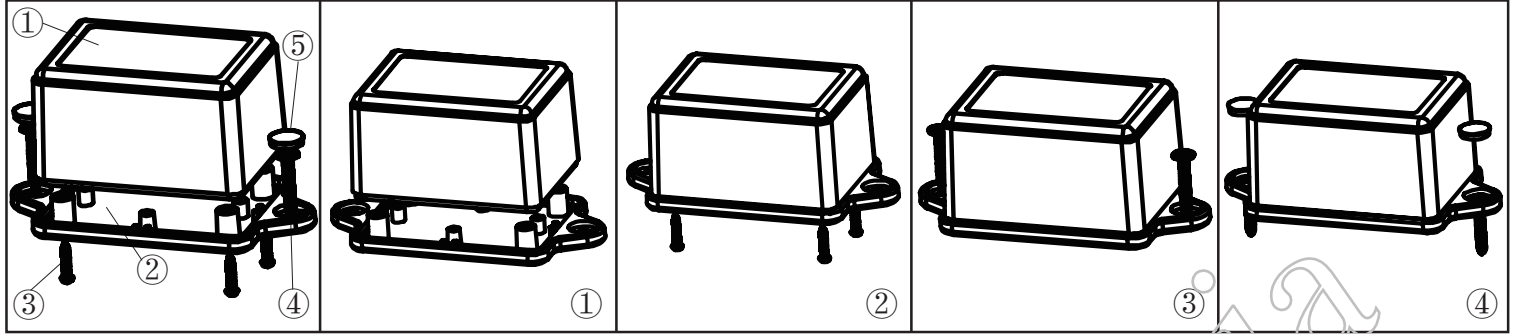
产品型号(MODEL NO.): BMW 50015-A1

产品尺寸 (SIZE): 70×50×40MM

产品重量(WEIGHT): 34 g



19221572



① 产品编号(NUMBER):60011-B1
 产品名称(NAME):上壳 EPIVALVE
 模具编号 (P/NO) :BAH10043-A1
 材料(MATERIAL):ABS(LIGHT GREY:FS20412)
 用量(QUANTITY):1 PCS
 重量(WEIGHT): 23 g

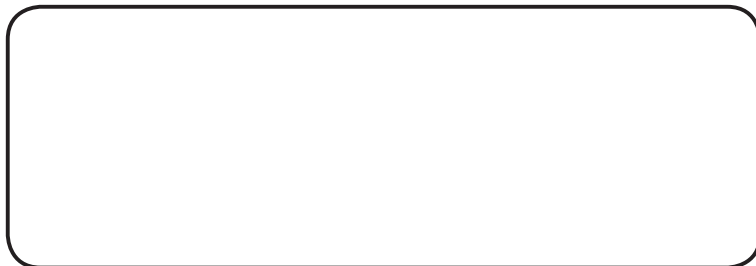
② 产品编号(NUMBER): 50015-C1
 产品名称(NAME):下壳 HYPOTHECA
 模具编号(P/NO): BAH10043-A2A3
 材料(MATERIAL):ABS(LIGHT GREY:FS20412)
 用量(QUANTITY): 1 PCS
 重量(WEITHG): 11 g

③ 产品编号(NUMBER):PA2.3×12
 产品名称(NAME):圆头螺丝SELF-TAPPING SCREW
 规格(STANDARD): M2.3×12
 材料(MATERIAL):铁 IRON
 用量(QUANTITY):4 PCS

④ 产品编号(NUMBER): S-5
 产品名称(NAME): 墙钉 WALL NAIL
 模具编号(P/NO): BAH10032-A1A2
 规格(STANDARD): S×5 φ3-4
 材料(MATERIAL): PP(GREY:CM906)
 用量(QUANTITY): 2 PCS

⑤ 产品编号(NUMBER): PWA3×25
 产品名称(NAME):自攻螺丝SELF-TAPPING SCREW
 规格(STANDARD): M3×25
 材料(MATERIAL):铁 IRON
 用量(QUANTITY):2 PCS

⑥ 产品编号(NUMBER): KN-500-B1
 产品名称(NAME): 螺丝盖 SCREW LID
 模具编号(P/NO): BAH10001-A3
 材料(MATERIAL): ABS(LIGHT GREY:FS20412)
 用量(QUANTITY):2 PCS
 重量(WEITHG): 0.0875g



名称 NAME	尺寸 SIZE (MM)	CARTON NO.	G. W (KG)	N. W (KG)	每箱数量 QUANTITY	PE袋 POLYBAG
小箱 SAMLL CARTON	112×58×48		0.060	0.039	1 (PCS)	175×95 (MM)
大箱 BIG CARTON	400×285×250		5	3	76 (PCS)	