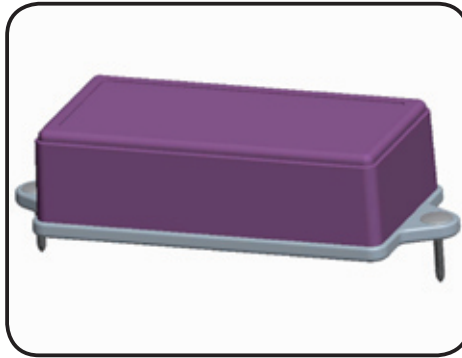


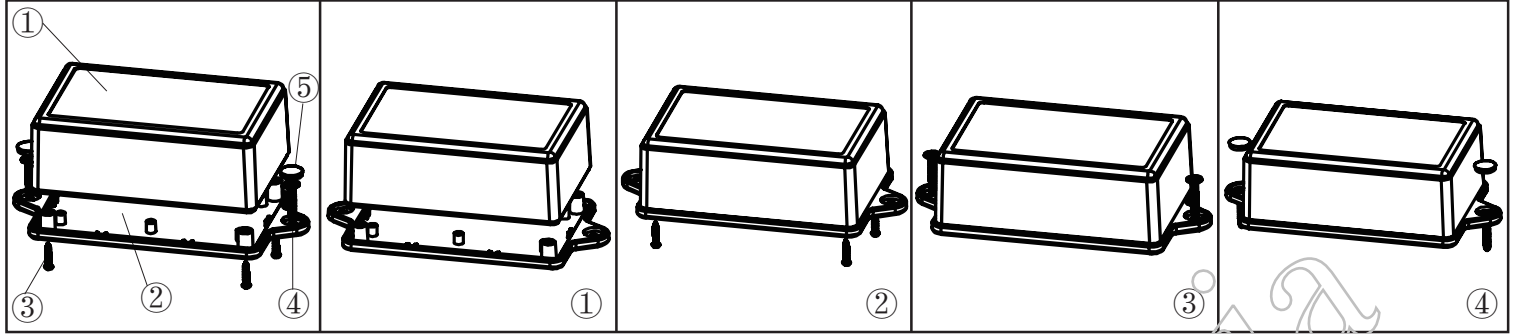
产品型号(MODEL NO.): BMW 50011-A1

产品尺寸 ( SIZE ): 110×70×40MM


产品重量(WEIGHT): 62 g



19221564




①




产品编号(NUMBER):60007-B1  
 产品名称(NAME):上壳 EPIVALVE  
 模具编号 (P/NO) :BAH10039-A1  
 材料(MATERIAL):ABS(LIGHT GREY:FS20412)  
 用量(QUANTITY):1 PCS  
 重量(WEIGHT) : 41 g

②




产品编号(NUMBER): 50011-C1  
 产品名称(NAME):下壳 HYPOTHECA  
 模具编号(P/NO): BAH10039-A2A3  
 材料(MATERIAL):ABS(LIGHT GREY:FS20412)  
 用量(QUANTITY): 1 PCS  
 重量(WEITHG): 21 g

③




产品编号(NUMBER):PA2.3×12  
 产品名称(NAME):圆头螺丝SELF-TAPPING SCREW  
 规格(STANDARD): M2.3×12  
 材料(MATERIAL):铁 IRON  
 用量(QUANTITY):4 PCS

④



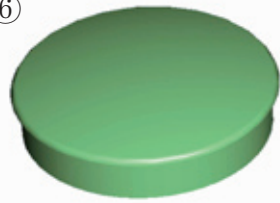
产品编号(NUMBER): S-5  
 产品名称(NAME): 墙钉 WALL NAIL  
 模具编号(P/NO): BAH10032-A1A2  
 规格(STANDARD): S×5 φ3-4  
 材料(MATERIAL): PP(GREY :CM906)  
 用量(QUANTITY): 2 PCS

⑤

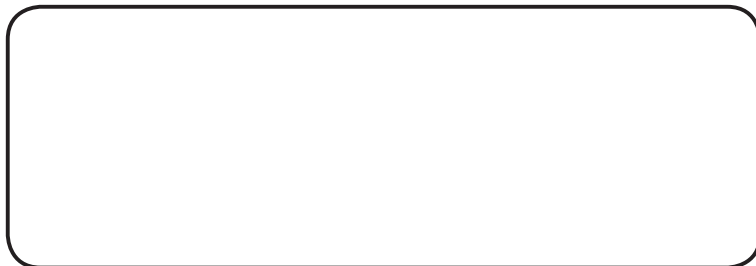


产品编号(NUMBER): PWA3×25  
 产品名称(NAME):自攻螺丝SELF-TAPPING SCREW  
 规格(STANDARD): M3×25  
 材料(MATERIAL):铁 IRON  
 用量(QUANTITY):2 PCS

⑥



产品编号(NUMBER): KN-500-B1  
 产品名称(NAME): 螺丝盖 SCREW LID  
 模具编号(P/NO): BAH10001-A3  
 材料(MATERIAL): ABS(LIGHT GREY:FS20412)  
 用量(QUANTITY):2 PCS  
 重量(WEITHG): 0.0875g



名称 NAME	尺寸 SIZE (MM)	CARTON NO.	G . W (KG)	N . W (KG)	每箱数量 QUANTITY	PE袋 POLYBAG
小箱 SAMLL CARTON	155×78×48	51	0.095	0.067	1 (PCS)	225×127 (MM)
大箱 BIG CARTON	563×438×670	29	24.5	16.5	236 (PCS)	