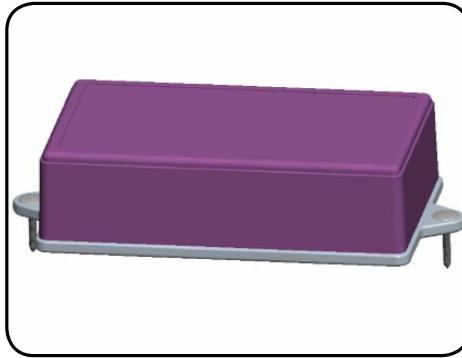


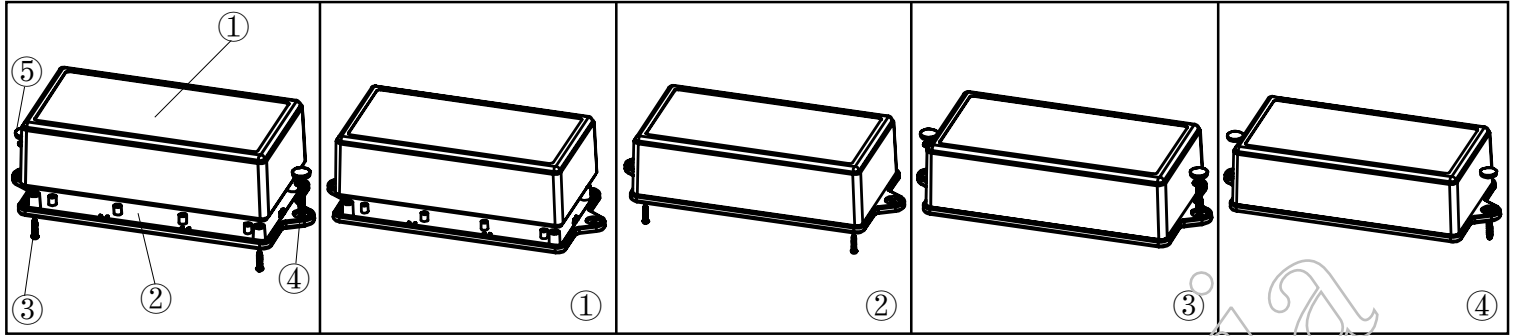
产品型号(MODEL NO.): BMW 50009-A2

产品尺寸 (SIZE): 145×85×40MM


产品重量(WEIGHT): 98 g



19221561




①




产品编号(NUMBER):60005-B1
 产品名称(NAME):上壳 EPIVALVE
 模具编号 (P/NO) :BAH10037-A1
 材料(MATERIAL):ABS(BLACK:UN 2014)
 用量(QUANTITY):1 PCS
 重量(WEIGHT) : 64 g

②




产品编号(NUMBER): 50009-C1
 产品名称(NAME):下壳 HYPOTHECA
 模具编号(P/NO): BAH10037-A2A3
 材料(MATERIAL):ABS(BLACK:UN 2014)
 用量(QUANTITY): 1 PCS
 重量(WEITHG): 35 g

③




产品编号(NUMBER):PA2.3×12
 产品名称(NAME):圆头螺丝SELF-TAPPING SCREW
 规格(STANDARD):M2.3×12
 材料(MATERIAL):铁 IRON
 用量(QUANTITY):4 PCS

④



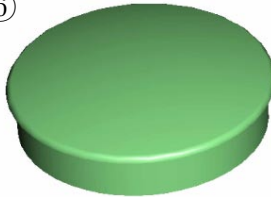
产品编号(NUMBER): S-5
 产品名称(NAME): 墙钉 WALL NAIL
 模具编号(P/NO): BAH10032-A1A2
 规格(STANDARD): S×5 φ3-4
 材料(MATERIAL): PP(GREY:CM906)
 用量(QUANTITY): 2 PCS

⑤

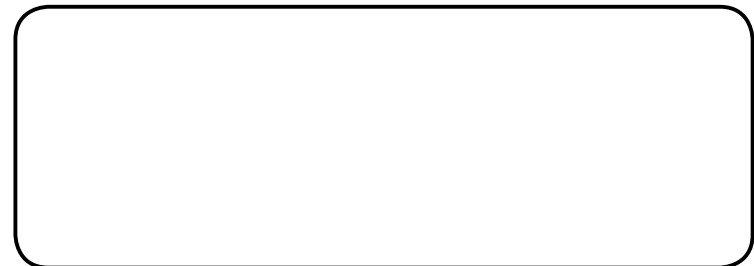
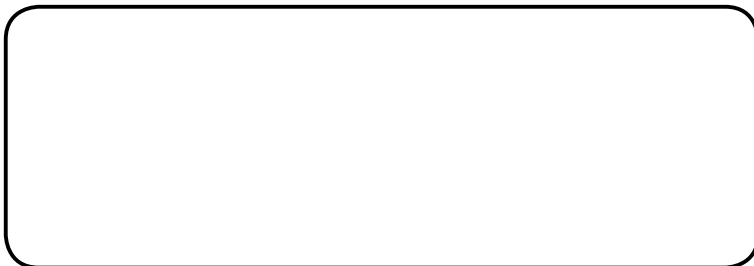


产品编号(NUMBER): PWA3×25
 产品名称(NAME):自攻螺丝SELF-TAPPING SCREW
 规格(STANDARD): M3×25
 材料(MATERIAL): 铁 IRON
 用量(QUANTITY): 2 PCS

⑥



产品编号(NUMBER): KN-500-B1
 产品名称(NAME): 螺丝盖 SCREW LID
 模具编号(P/NO): BAH10001-A3
 材料(MATERIAL): ABS(BLACK:UN 2014)
 用量(QUANTITY): 2 PCS
 重量(WEITHG): 0.0875g



名称 NAME	尺寸 SIZE (MM)	CARTON NO.	G . W (KG)	N . W (KG)	每箱数量 QUANTITY	PE袋 POLYBAG
小箱 SAMLL CARTON	190×93×48	46	0.139	0.103	1 (PCS)	250×131 (MM)
大箱 BIG CARTON	645×410×395	14	16	13	104 (PCS)	