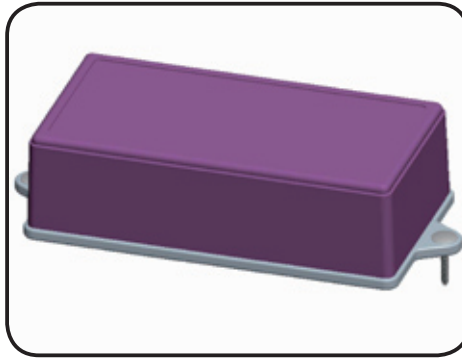


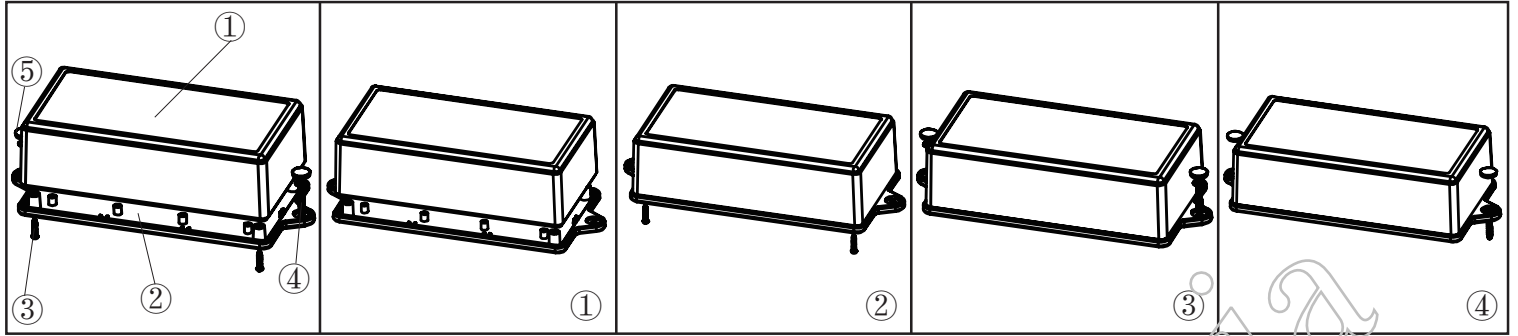
产品型号(MODEL NO.): BMW 50008-A1

产品尺寸 (SIZE): 155×80×45MM


产品重量(WEIGHT): 110 g



19221558




①




产品编号(NUMBER):60004-B1
 产品名称(NAME):上壳 EPIVALVE
 模具编号 (P/NO) :BAH10036-A1
 材料(MATERIAL):ABS(LIGHT GREY:FS20412)
 用量(QUANTITY):1 PCS
 重量(WEIGHT) : 76 g

②




产品编号(NUMBER): 50008-C1
 产品名称(NAME):下壳 HYPOTHECA
 模具编号(P/NO): BAH10036-A2A3
 材料(MATERIAL):ABS(LIGHT GREY:FS20412)
 用量(QUANTITY): 1 PCS
 重量(WEIGHT): 34 g

③




产品编号(NUMBER):PA2.3×12
 产品名称(NAME):圆头螺丝SELF-TAPPING SCREW
 规格(STANDARD):M2.3×12
 材料(MATERIAL):铁 IRON
 用量(QUANTITY):4 PCS

④



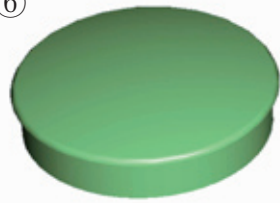
产品编号(NUMBER): S-5
 产品名称(NAME): 墙钉 WALL NAIL
 模具编号(P/NO): BAH10032-A1A2
 规格(STANDARD): S×5 φ3-4
 材料(MATERIAL):PP(GREY :CM906)
 用量(QUANTITY) : 2 PCS

⑤

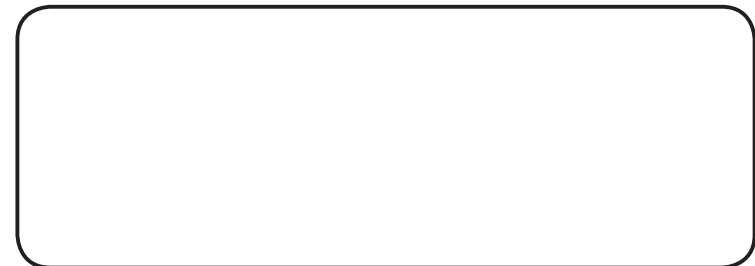
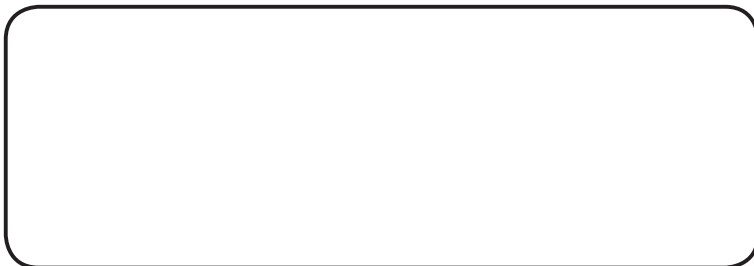


产品编号(NUMBER): PWA3×25
 产品名称(NAME):自攻螺丝SELF-TAPPING SCREW
 规格(STANDARD): M3×25
 材料(MATERIAL):铁 IRON
 用量(QUANTITY):2 PCS

⑥



产品编号(NUMBER): KN-500-B1
 产品名称(NAME): 螺丝盖 SCREW LID
 模具编号(P/NO): BAH10001-A3
 材料(MATERIAL): ABS(LIGHT GREY:FS20412)
 用量(QUANTITY):2 PCS
 重量(WEIGHT): 0.0875g



| 名称 NAME | 尺寸 SIZE (MM) | CARTON NO. | G. W (KG) | N. W (KG) | 每箱数量 QUANTITY | PE袋 POLYBAG |
|-----------------|--------------|------------|-----------|-----------|---------------|--------------|
| 小箱 SAMLL CARTON | 200×88×52 | 48 | 0.158 | 0.115 | 1 (PCS) | 250×132 (MM) |
| 大箱 BIG CARTON | 565×400×335 | 11 | 12.5 | 10.5 | 72 (PCS) | |