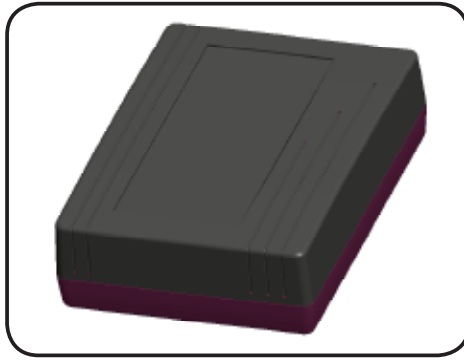


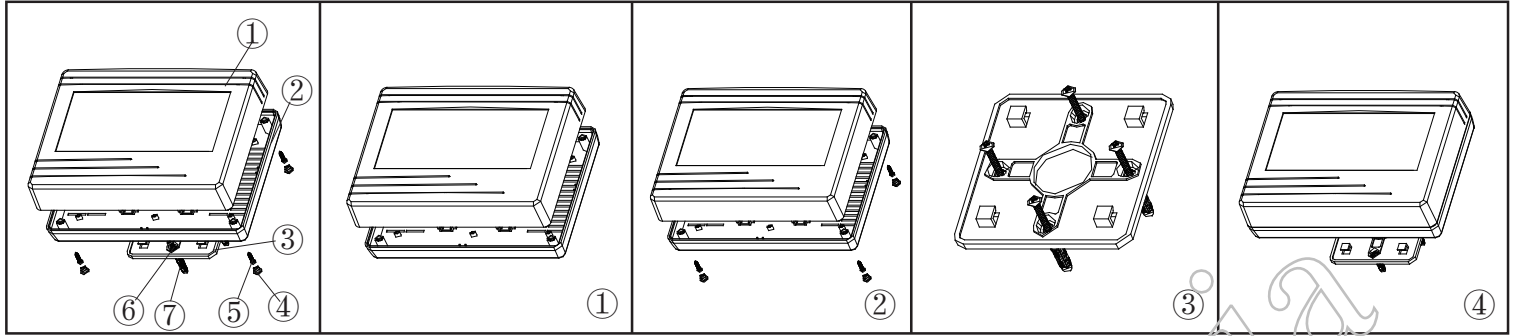
产品型号(MODEL NO.): BMW 50004-A1

产品尺寸 ( SIZE ): 200×145×56MM

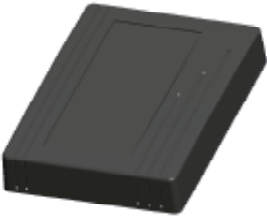
产品重量(WEIGHT): 281.7 g



19221554



①



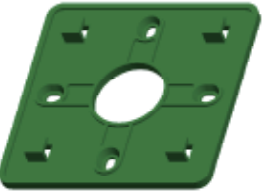
产品编号(NUMBER):50004-B1  
 产品名称(NAME):上壳 EPIVALVE  
 模具编号 (P/NO) :BAH10030-A  
 材料(MATERIAL):ABS(LIGHT GREY:FS20412)  
 用量(QUANTITY):1 PCS  
 重量(WEIGHT) : 144.7 g

②



产品编号(NUMBER): 50002-C1  
 产品名称(NAME):下壳 HYPOTHECA  
 模具编号(P/NO): BAH1021-A2  
 材料(MATERIAL):ABS(LIGHT GREY:FS20412)  
 用量(QUANTITY): 1 PCS  
 重量(WEITHG): 112 g

③




产品编号(NUMBER):50002-D1  
 产品名称(NAME):墙挂 WALL TIE ACCESSORIES  
 模具编号 (P/NO) :BAH110021-A3  
 材料(MATERIAL):ABS(LIGHT GREY:FS20412)  
 用量 (QUANTITY): 1 PCS  
 重量(WEIGHT) : 24 g

④




产品编号(NUMBER): BP-8  
 产品名称(NAME):脚垫 FOOTPEAL  
 模具编号(P/NO): BAH10020-A4  
 材料(MATERIAL):PVC(白色WHITE:CM7070)  
 用量(QUANTITY): 4 PCS  
 重量(WEITHG): 0.258 g

⑤




产品编号(NUMBER):PA3×12  
 产品名称(NAME):圆头螺丝 SELF-TAPPING SCREW  
 规格(STANDARD): M3×12  
 材料(MATERIAL):铁 IRON  
 用量(QUANTITY): 4 PCS

⑥

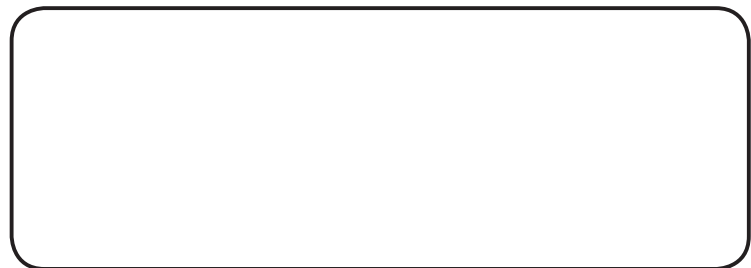


产品编号(NUMBER):PWA3×25  
 产品名称(NAME):圆头螺丝 SELF-TAPPING SCREW  
 规格(STANDARD): M3×25  
 材料(MATERIAL):铁 IRON  
 用量(QUANTITY): 4 PCS

⑦



产品编号(NUMBER): S-5  
 产品名称(NAME):墙钉 WALL NAIL  
 模具编号(P/NO): BAH10032-A1A2  
 规格(STANDARD): S×5 φ3-4  
 材料(MATERIAL): PP(GREY:CM906)  
 用量(QUANTITY): 4 PCS



名称 NAME	尺寸 SIZE (MM)	CARTON NO.	G . W (KG)	N . W (KG)	每箱数量 QUANTITY	PE袋 POLYBAG
小箱 SAMLL CARTON	220×153×67	42			1 (PCS)	265X265 (MM)
大箱 BIG CARTON	545×480×455					