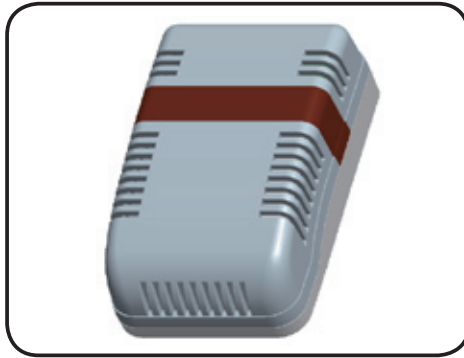


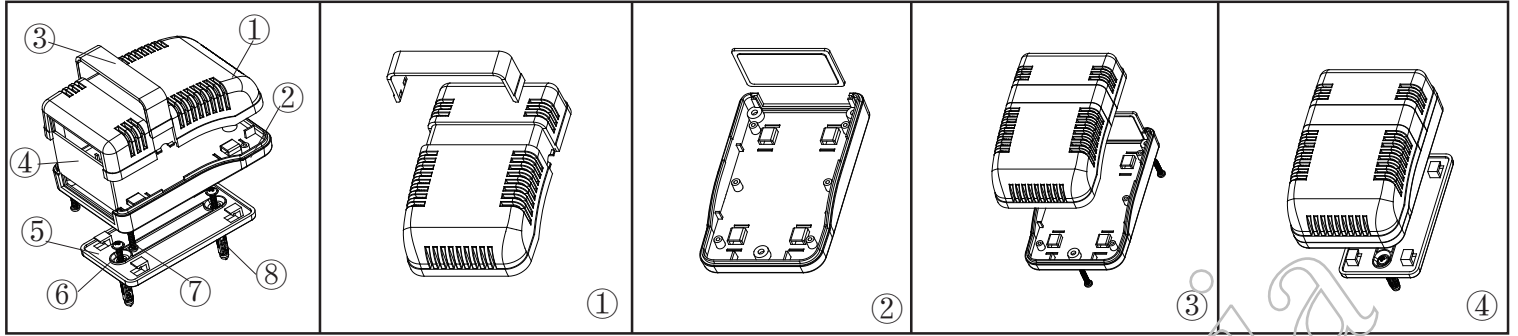
产品型号(MODEL NO.): BMW 50001-A2

产品尺寸 ( SIZE ): 110×70×38MM

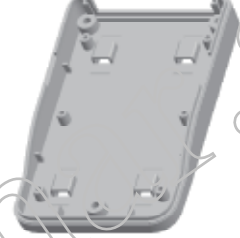
产品重量(WEIGHT): 80 g





19221551

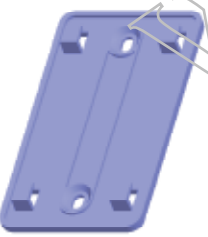



①  产品编号(NUMBER):50001-B1  
 产品名称(NAME):上壳 EPIVALVE  
 模具编号 (P/NO) :BAH10006-A1  
 材料(MATERIAL):ABS(WHITE:CM7070)  
 用量(QUANTITY):1 PCS  
 重量(WEIGHT) : 35 g


②  产品编号(NUMBER): 50001-C1  
 产品名称(NAME):下壳 HYPOTHECA  
 模具编号(P/NO): BAH10006-A2  
 材料(MATERIAL):ABS(GRAYISH:CM9130)  
 用量(QUANTITY): 1 PCS  
 重量(WEITHG): 29 g


③  产品编号(NUMBER): 50001-D1  
 产品名称(NAME): TRANSLUCENT COVER  
 模具编号 (P/NO) :BAH10006-A3  
 材料(MATERIAL) :PMMA TAWNY:0571  
 用量(QUANTITY): 1 PCS  
 重 量(WEIGHT): 4 g

④  产品编号(NUMBER):50001-E1  
 产品名称(NAME): 挡板 DAMBOARD  
 模具编号(P/NO): BAH10006-A4  
 材料(MATERIAL):ABS(GRAYISH:CM9130)  
 用量(QUANTITY): 1 PCS  
 重量(WEITHG): 4 g

⑤  产品编号(NUMBER):50001-F1  
 产品名称(NAME): 墙挂WALL TIE ACCESSORIES  
 模具编号 (P/NO) :BAH10006-A5  
 材料(MATERIAL):ABS(GRAYISH:CM9130)  
 用量 (QUANTITY): 1 PCS  
 重量(WEIGHT) : 12 g

⑥  产品编号(NUMBER): M3×25  
 产品名称(NAME): 自攻螺丝SELF-TAPPING SCREW  
 规格(STANDARD): M3×25  
 材料(MATERIAL): 铁 IRON  
 用量(QUANTITY): 2 PCS

⑦  产品编号(NUMBER):M3×14  
 产品名称(NAME):圆头螺丝SELF-TAPPING SCREW  
 规格(STANDARD): M3×14  
 材料(MATERIAL): 铁 IRON  
 用量(QUANTITY): 3 PCS

⑧  产品编号(NUMBER): S-6  
 产品名称(NAME): 墙钉 WALL NAIL  
 模具编号(P/NO): BAH10032-A1A2  
 规格(STANDARD): S×6 φ3-4  
 材料(MATERIAL): PP(GREY:CM906)  
 用量(QUANTITY): 2 PCS

名称 NAME	尺寸 SIZE (MM)	CARTON NO.	G. W (KG)	N. W (KG)	每箱数量 QUANTITY	PE袋 POLY BAG
小箱 SAML CARTON	125×76×53		0.108	0.085	1 (PCS)	160X105 (MM)
大箱 BIG CARTON	595×425×545	26	27.5	25	235 (PCS)	