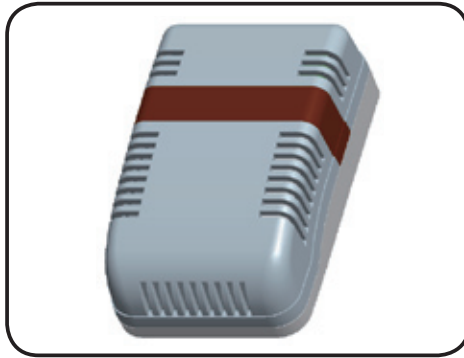


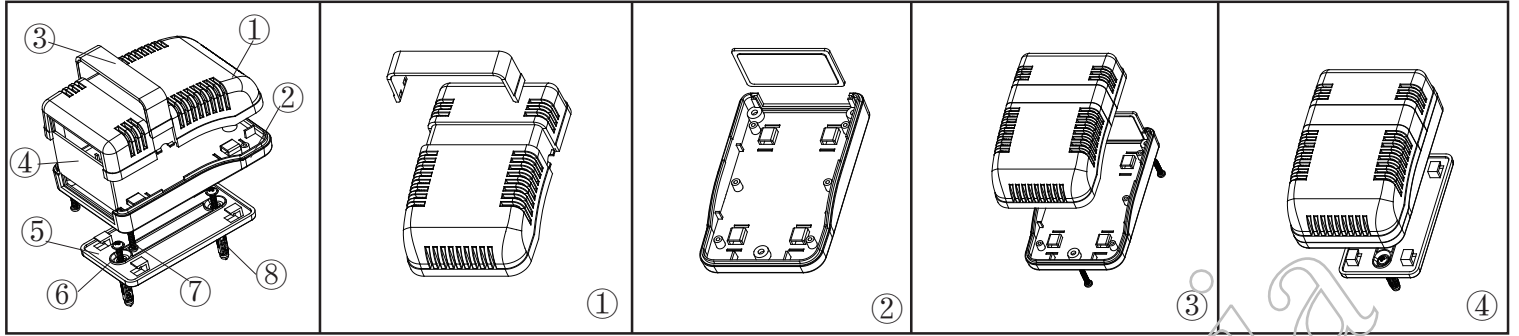
产品型号(MODEL NO.): BMW 50001-A1

产品尺寸 (SIZE): 110×70×38MM

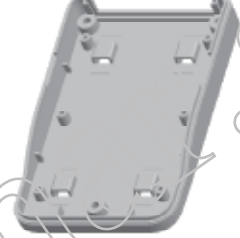
产品重量(WEIGHT): 80 g





19221550

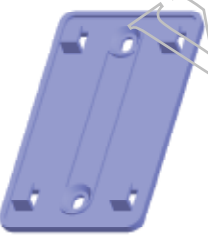



①  产品编号(NUMBER):50001-B1
 产品名称(NAME):上壳 EPIVALVE
 模具编号 (P/NO) :BAH10006-A1
 材料(MATERIAL):ABS(LIGHT GREY:FS20412)
 用量(QUANTITY):1 PCS
 重量(WEIGHT) : 35 g


②  产品编号(NUMBER): 50001-C1
 产品名称(NAME):下壳 HYPOTHECA
 模具编号(P/NO): BAH10006-A2
 材料(MATERIAL):ABS(LIGHT GREY:FS20412)
 用量(QUANTITY): 1 PCS
 重量(WEITHG) : 29 g


③  产品编号(NUMBER): 50001-D1
 产品名称(NAME): TRANSLUCENT COVER
 模具编号 (P/NO) :BAH10006-A3
 材料(MATERIAL) :PMMA (TAWNY:0571)
 用量(QUANTITY): 1 PCS
 重 量(WEIGHT): 4 g

④  产品编号(NUMBER):50001-E1
 产品名称(NAME): 挡板 BAFFLE
 模具编号(P/NO): BAH10006-A4
 材料(MATERIAL):ABS(LIGHT GREY:FS20412)
 用量(QUANTITY): 1 PCS
 重量(WEITHG) : 4 g

⑤  产品编号(NUMBER):50001-F1
 产品名称(NAME): 墙挂WALL TIE ACCESSORIES
 模具编号 (P/NO) :BAH10006-A5
 材料(MATERIAL):ABS(LIGHT GREY:FS20412)
 用量 (QUANTITY): 1 PCS
 重量(WEIGHT) : 12 g Z

⑥  产品编号(NUMBER):PWA3×25
 产品名称(NAME):自攻螺丝SELF-TAPPING SCREW
 规格(STANDARD):M3×25
 材料(MATERIAL):铁 IRON
 用量(QUANTITY):2 PCS

⑦  产品编号(NUMBER):PA3×14
 产品名称(NAME):圆头螺丝SELF-TAPPING SCREW
 规格(STANDARD):M3×14
 材料(MATERIAL):铁 IRON
 用量(QUANTITY):3 PCS

⑧  产品编号(NUMBER): S-5
 产品名称(NAME): 墙钉 WALL NAIL
 模具编号(P/NO): BAH10032-A1A2
 规格(STANDARD): S×5 φ3-4
 材料(MATERIAL): PP(GREY:CM906)
 用量(QUANTITY): 2 PCS

名称 NAME	尺寸 SIZE (MM)	CARTON NO.	G. W (KG)	N. W (KG)	每箱数量 QUANTITY	PE袋 POLY BAG
小箱 SAML CARTON	125×76×53		0.108	0.085	1 (PCS)	170X120 (MM)
大箱 BIG CARTON	595×425×545	26	27.5	25	235 (PCS)	