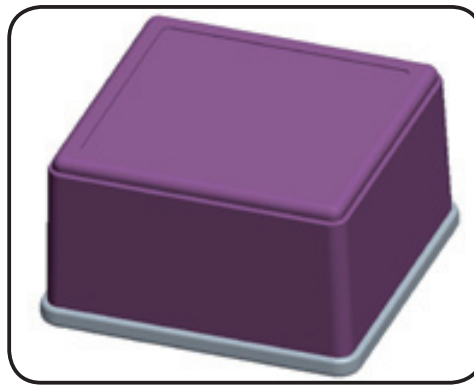


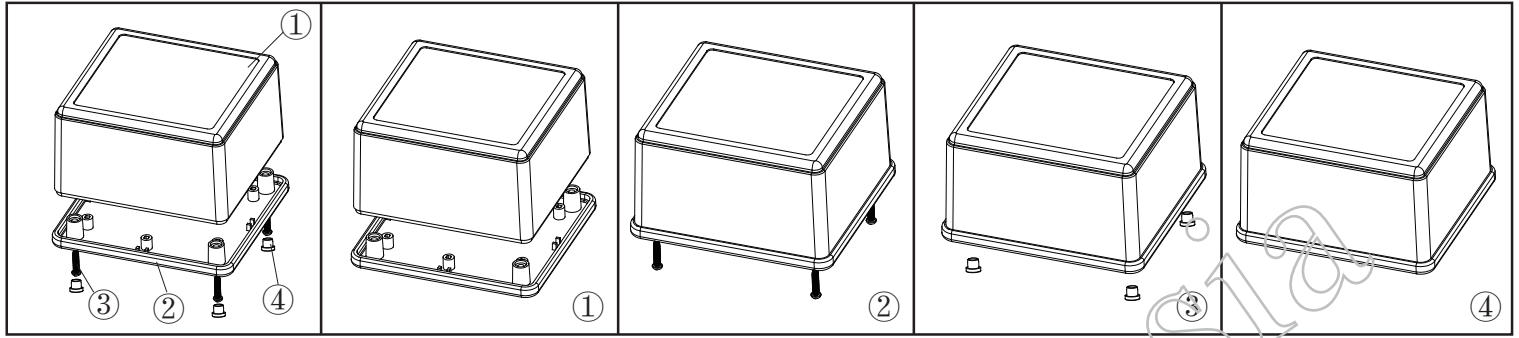
产品型号(MODEL NO.): BMD 60010-A1

产品尺寸 ( SIZE ): 80×75×45 mm


产品重量(WEIGHT): 52 g



20221588

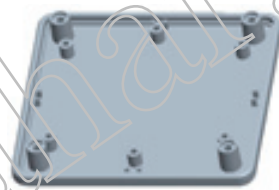


①




产品编号(NUMBER):60010-B1  
产品名称(NAME):上壳 EPIVALVE  
模具编号 (P/NO) :BAH10042-A1  
材料(MATERIAL):ABS(LIGHT GREY:FS20412)  
用量(QUANTITY):1 PCS  
重量(WEIGHT) : 37 g

②



产品编号(NUMBER): 60010-C1  
产品名称(NAME):下壳 HYPOTHECA  
模具编号(P/NO): BAH10042-A2A3  
材料(MATERIAL):ABS(LIGHT GREY:FS20412)  
用量(QUANTITY): 1 PCS  
重量(WEITHG): 15 g

③



产品编号(NUMBER):PA 2.3 × 12  
产品名称(NAME):圆头螺丝SELF-TAPPING SCREW  
规格(STANDARD): M2.3 × 12  
材料(MATERIAL):铁 IRON  
用量(QUANTITY): 4 PCS

④



产品编号(NUMBER): BP-3  
产品名称(NAME):脚垫 FOOT PAD  
模具编号(P/NO): BAH10044-A  
材料(MATERIAL):PVC(LIGHT GREY:FS20412)  
用量(QUANTITY) : 4 PCS  
重量(WEITHG) :

| 名称 NAME        | 尺寸 SIZE (MM)    | CARTON No. | G . W (KG) | N . W (KG) | 每箱数量 QUANTITY | PE袋 POLYBAG |
|----------------|-----------------|------------|------------|------------|---------------|-------------|
| 小箱 SAML CARTON | 95 × 83 × 53    |            | 0.077      | 0.053      | 1 (PCS)       |             |
| 大箱 BIG CARTON  | 348 × 293 × 185 |            | 3.5        | 2.5        | 36 (PCS)      |             |