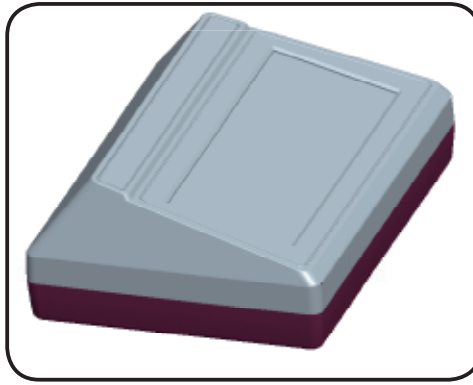


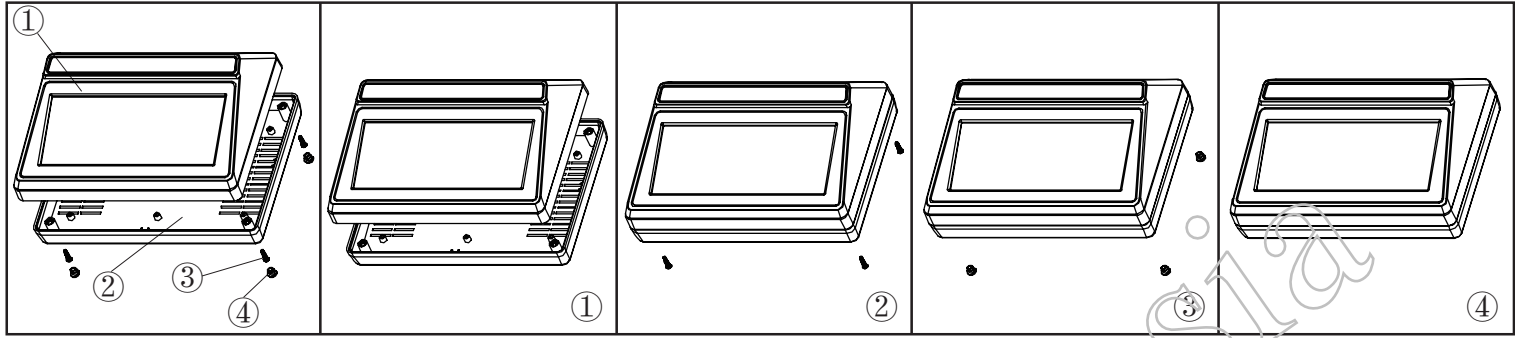
产品型号(MODEL NO.): BDC 30005-A1

产品尺寸 (SIZE): 200×145×54 mm

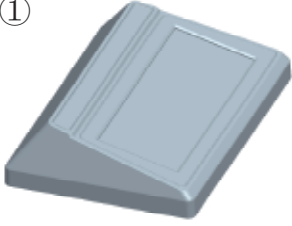
产品重量(WEIGHT): 243 g



18221507

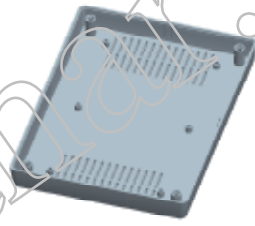


①




产品编号(NUMBER):30005-B1
 产品名称(NAME):上壳 EPIVALVE
 模具编号 (P/NO) : BAH10031-A
 材料(MATERIAL):ABS(LIGHT GREY:FS20412)
 用量(QUANTITY):1 PCS
 重量(WEIGHT) : 132 g

②




产品编号(NUMBER): 30002-C1
 产品名称(NAME):下壳 HYPOTHECA
 模具编号(P/NO): BAH10021-A2
 材料(MATERIAL):ABS(LIGHT GREY:FS20412)
 用量(QUANTITY): 1 PCS
 重量(WEITHG): 112 g

③

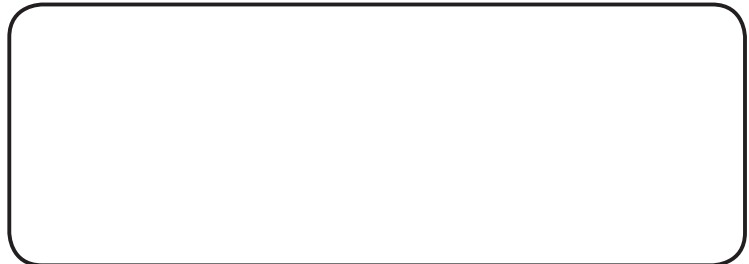


产品编号(NUMBER):PA3×14
 产品名称(NAME):圆头螺丝SELF-TAPPING SCREW
 规格(STANDARD): M3×14
 材料(MATERIAL):铁 IRON
 用量(QUANTITY): 4 PCS

③



产品编号(NUMBER): BP-8
 产品名称(NAME):脚垫 FOOT PAD
 模具编号(P/NO): BAH10020-A4
 材料(MATERIAL):PVC(WHITE:CM7070)
 用量(QUANTITY): 4 PCS
 重量(WEITHG): 0.258 g



名称 NAME	尺寸 SIZE (MM)	CARTON No.	G . W (KG)	N . W (KG)	每箱数量 QUANTITY	PE袋 POLYBAG
小箱 SAMLL CARTON	220×173×98	36	0.353	0.247	1 (PCS)	267×260 (MM)
大箱 BIG CARTON	790×365×680		19	12	48 (PCS)	