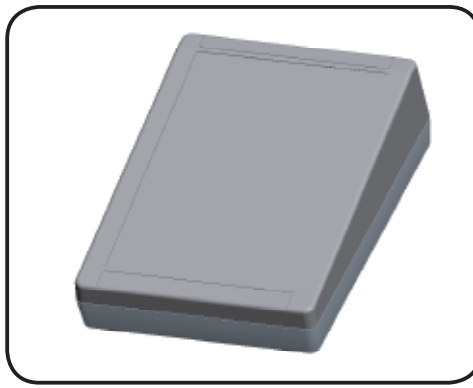


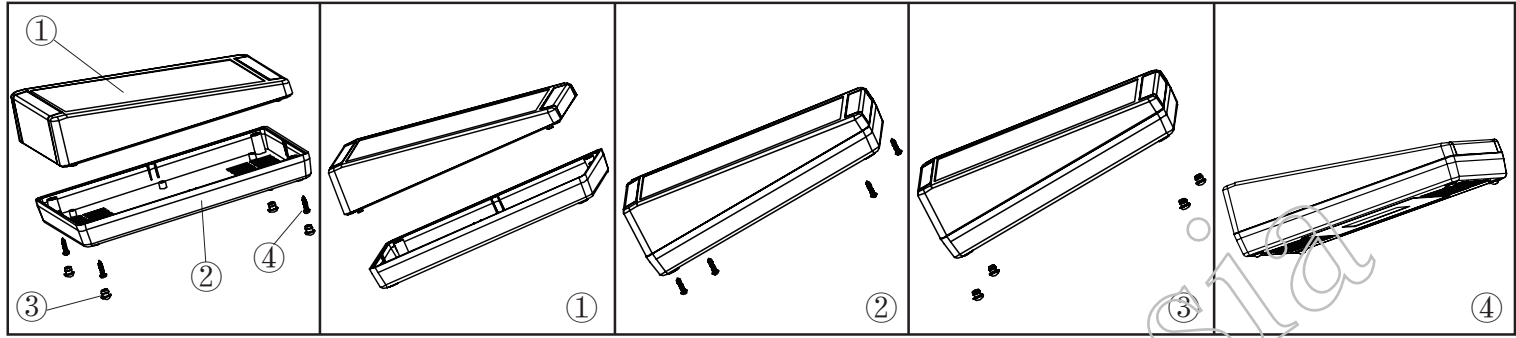
产品型号(MODEL NO.): BDC 30003-A1


产品尺寸 (SIZE): 200×145×63 mm

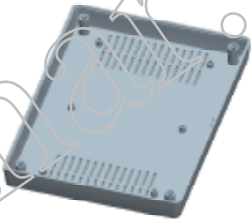
产品重量(WEIGHT): 257 g

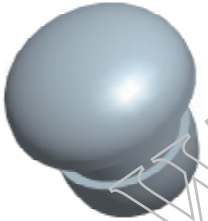


18221503



①  产品编号(NUMBER): 50003-B1
 产品名称(NAME): 上壳 EPIVALVE
 模具编号 (P/NO): BAH10022-A1
 材料(MATERIAL): ABS(LIGHT GREY:FS20412)
 用量(QUANTITY): 1 PCS
 重量(WEIGHT): 146 g

②  产品编号(NUMBER): 30002-C1
 产品名称(NAME): 下壳 HYPOTHECA
 模具编号(P/NO): BAH10021-A2
 材料(MATERIAL): ABS(LIGHT GREY:FS20412)
 用量(QUANTITY): 1 PCS
 重量(WEIGHT): 112 g

③  产品编号(NUMBER): BP-8
 产品名称(NAME): 脚垫 FOOT PAD
 模具编号(P/NO): BAH10020-A4
 材料(MATERIAL): PVC(WHITE:CM7070)
 用量(QUANTITY): 4 PCS
 重量(WEIGHT): 0.258 g

④  产品编号(NUMBER): PA3×12
 产品名称(NAME): 圆头螺丝 SELF-TAPPING SCREW
 规格(STANDARD): M3×12
 材料(MATERIAL): 铁 IRON
 用量(QUANTITY): 4 PCS



名称 NAME	尺寸 SIZE (MM)	CARTON No.	G . W (KG)	N . W (KG)	每箱数量 QUANTITY	PE袋 POLYBAG
小箱 SAMLL CARTON	226 × 156 × 95	17	0.369	0.261		265 × 260 (MM)
大箱 BIG CARTON	740 × 490 × 710	16	28.5	22.5	72 (PCS)	